

For environments such as special schools, where many of the children require regular hygiene attention, these variable height tables provide not only a low transfer height but quick and simple adjustment to the correct height for changing procedures, thus reducing back and postural problems for support staff

**MODEL SPECIFICATION**

- Safe working load and lifting capacity (from minimum height) of 240kgs (528lbs=37.7 stone)
  - Choice of manual or electric height elevation
  - Choice of retractable wheel or large mobile wheel design with steering control
  - Excellent height range from 46-98cm (18"-38")
  - Purpose made precision bearings on all pivot points
  - Clearance beneath frame for mobile hoist
  - Hand switch fitted as standard on electric models
  - Two upholstery lengths available 184cm (72") and 152cm (60") x 65cm (25") wide
  - Choice of upholstery colours - see back cover
- For alternative widths, please refer to price list.*

**OPTIONAL COUCH ACCESSORIES**

- Power supply safety module
- Single foot switch operation for electric models
- Double foot switch operation for electric models
- Paper towel holder
- Side support rails and cushions
- Matching therapy chair or stool
- Removable head/knee support
- Stretch towelling covers
- Protective base shrouding

*See pages 42-43 for additional information*

**HYGIENE THERAPY TABLE**

**HYGIENE THERAPY TABLE**

**CHOICE OF MODELS AVAILABLE**

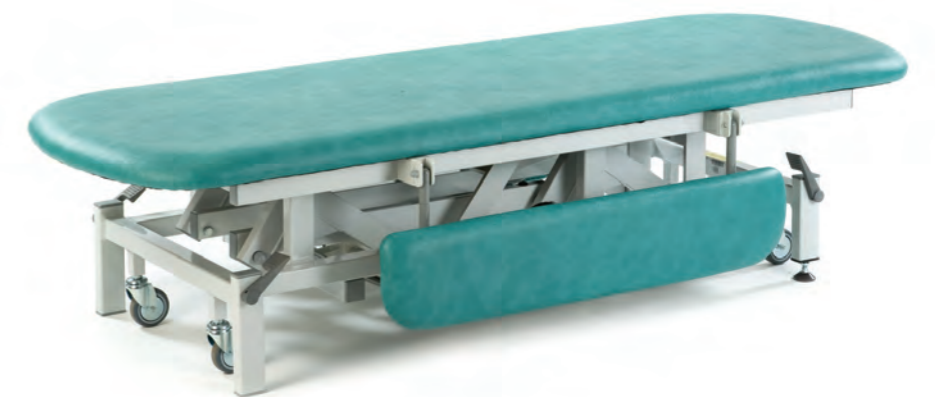
- ST1551** Hydraulic with retractable design
- ST1561** Electric with retractable design
- ST1651** Hydraulic with large wheel design
- ST1661** Electric with large wheel design



Model **ST1551** - Hydraulic elevation with optional side support rails and cushions. Colour Lotus Green



Model **ST1551** - Mid height, with optional side support rails. Colour Lotus Green



Model **ST1551** - Low transfer height, with optional side support rails and cushions. Colour Lotus Green

